

# June

An 11 year old, female, Poodle named Prissy was presented to the hospital for not eating, vomiting and lethargy for one to two days. Her owners also noted a discharge from her vulva that had begun a few days previously.



Physically, Prissy was dehydrated and she had an elevated temperature of 103.5. A tubular mass was felt in her abdomen.

An x-ray was taken to determine the nature of the mass. Prissy's uterus was found to be very enlarged, taking up a large amount of space in her belly. Bloodwork was performed to look for any other abnormalities. Her white blood cell count was 80,000 (normal 5,000-12,000), indicating a severe infection. Her kidney values were also moderately elevated.

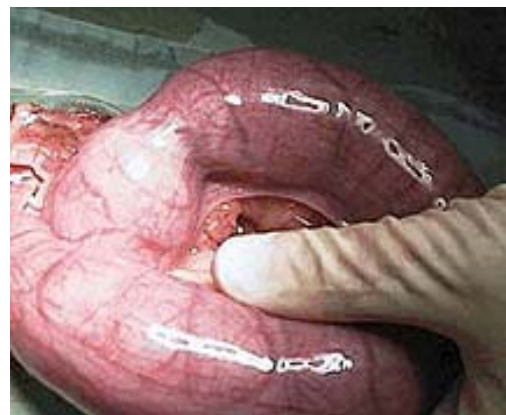


Prissy was started on intravenous fluids and antibiotics and scheduled for emergency surgery that afternoon. A spay was performed to removed the infected uterus. Prissy stayed in the hospital for two nights until her bloodwork had improved and then released.

**Normal Uterus**



**Infected Uterus**



Pyometra is a condition that occurs in female dogs that have not been spayed. Hormonal changes allow the uterus to fill with fluid. Bacteria from the vagina then colonize inside the fluid-filled uterus, leading to an isolated infection called pyometra (pyo=pus or infection, metra=uterus). Pyometra can be life threatening as the toxins from the bacteria build up and enter the blood stream, affecting other organs,

such as the kidneys. The treatment of choice for this condition is ovariohysterectomy or spaying. The prognosis is fair to good; depending on how affected the animal is at the time of diagnosis and surgery.

Pyometra can occur in female cats and dogs and the only prevention is spaying. Early spays have also been proven to lessen the chance of certain types of cancers in female dogs. We recommend animals be spayed at six months of age if they are not used for breeding.

If you have any questions concerning pyometra or spaying, please contact us!

Pictures courtesy:

<http://www.clivir.com/temp/cache/9c83597a512548d1e553cc7d1c71bdf9.png>

[www.lbah.com/canine/spay.html](http://www.lbah.com/canine/spay.html)